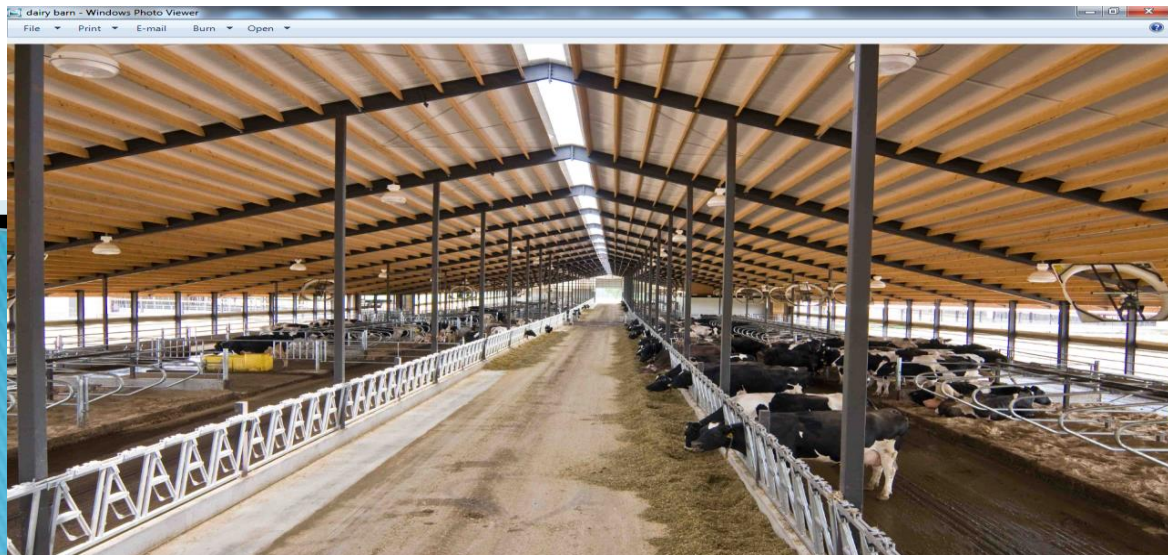




OSHA Dairy Farm Initiative–Year 2

February 19, 2015



USDOL/OSHA
Ronald Williams, Compliance
Assistance Specialist
3300 Vickery Rd.
North Syracuse, NY 13212
315-451-0808 ext. 3002

Objectives

- ▶ Discuss the Local Emphasis Program (LEP) for Dairy Farm Operations
- ▶ Inspections conducted by Federal OSHA
- ▶ Hazards identified by NYS 21d Onsite Consultation Service
- ▶ Question & Answers

SECOND GEN
BIG SHIFT
WATERING DOWN EFFECT

1 OPENING CONFERENCE
2 WALK AROUND
3 CLOSING

DIFFERENT CATEGORIES OF VIOLATIONS

DIFFERENT LEVELS

YOU HAVE THE RIGHT TO CONTEST 15 DAYS

FREE OF RECOGNIZABLE HAZARDS

OUR EMPLOYEES ARE SAFE!

WE ARE MAINTAINING ADEQUATE CONTROLS

ACTUAL COST
MORE THAN OSHA CITATION COST

IT'S A DAY-TO-DAY THING...

WHAT IS FREQUENT... WHAT IS REGULAR?



WHO DO I CALL?
WHO HAS THE AUTHORITY?
• COMPLAINTS

THE EMPLOYER
WE HAVE THE RIGHT TO REFUSE

UNDERSTANDING THE OSHA INSPECTION PROCESS

MULTI-EMPLOYER WORK SITE

WHAT MEASURES NEED TO BE TAKEN?

PEOPLE GETTING HURT
OUCH

HAZARD ASSESSMENT

UMM... I WAS IN CHARGE...

DIFFERENT TYPES/PRIORITIES
IMMINENT DANGER
FATALITY/CATASTROPHE
REFERRALS • FOLLOW-UP • PROGRAMMED
- SPECIAL EMPHASIS

UNDERSTANDING FROM BOTH SIDES...

INSPECTION ANY TIME

REASON TO BE THERE
CREDENTIALS
WHY OF THE VISIT

DUST! CONSTRUCTION
FOOD
SERIOUS CITATIONS COMES WITH PENALTY
RECORDS INSPECTION

REPRESENTATION
A RIGHT TO BE INTERVIEWED

IN PRIVATE

TAKE PHOTOS

ALLEGED VIOLATION...

CITATIONS MAY OR MAY NOT BE ISSUED

DID THE EMPLOYER KNOW... WILLFULLY...
CRIMINAL PENALTIES

WHAT HAPPENS IF YOU VIOLATE?

COMPLIANCE

I'M THE KING OF THE WORLD!

SECURITY... MEETING CRITERIA

WHATEVER IS SEEN

ALL FATALITIES & CATASTROPHES RESULT IN COMPREHENSIVE INSPECTION

SCOPE

YOU CAN HAVE A HAZARD UNTIL YOU HAVE

EXPOSURE

HERE TO DO MY JOB...
NOT TO INTERFERE



We Can Help

www.osha.gov

Programmed

vs.

Unprogrammed



Unprogrammed inspections are ***reactive*** in nature...

- *Fatalities (report within 8 hours)*
- *Catastrophes (report within 8 hours)*
- *Non-fatal accidents (report amputations, inpatient hospitalization & loss of eye within 24 hours)*
- *Referrals*
- *Complaints*

Enforcement Exemptions and Limitations under the Appropriations Act – CPL 2–0.51J

- ▶ A farming operation is **exempt** from all OSHA activities if it:
 - **Employs 10 or fewer employees** currently and *at all times* during the last 12 months; and
 - **Has not had an active temporary labor camp** during the proceeding 12 months.

Family members of farm employers are not counted when determining the number of employees.

A part-time employee is counted as “1” employee.

Key Definitions

- **Immediate family member** means those in **direct relation** to the farm employer, such as a **parent, spouse, or child**. Step-children, foster children, step-parents and foster parents will also be considered as immediate family members. Other relatives, even when living permanently in the same household as the employer, will not be considered to be part of the immediate family. Reference: Fair Labor Standards Act, 29 CFR 780.308 “Definition of immediate family” regarding exemptions under minimum wage and overtime provisions.
- **Temporary labor camp** means
 1. Employees employed for a set period of time (i.e 3 months, 6 months, a harvest etc.)
 2. Employers require employees to live in the employer provided housing.

Programmed inspections are ***proactive*** in nature...

- *Site Specific Targeting Inspections (SST)*
- *National Emphasis Programs (NEP)*
- *Special Emphasis Programs (SEP)*
- *Regional Emphasis Programs (REP)*
- ***Local Emphasis Programs (LEP)***



OSHA REGIONAL NOTICE

U.S. DEPARTMENT OF LABOR

Occupational Safety and Health Administration

DIRECTIVE NUMBER: 2015-03 (CPL 2)

EFFECTIVE DATE: 10/01/2014

SUBJECT: Local Emphasis Program for Dairy Farm Operations

REGIONAL IDENTIFIER: Region II

ABSTRACT

Purpose:

This Notice establishes a Local Emphasis Program (LEP) for the programmed inspection of the dairy farming industry.

Enforcement under the Dairy Farm Operations LEP

- ▶ A farming operation is **exempt** from OSHA enforcement activities under the LEP if it:
 - **Employs 10 or fewer employees** currently and at all times during the last 12 months (Family members of farm employers are not counted when determining the number of employees).

Immediate family member means those in **direct relation** to the farm employer, such as a **parent, spouse, or child**. Step-children, foster children, step-parents and foster parents will also be considered as immediate family members. Reference: Fair Labor Standards Act, 29 CFR 780.308 “Definition of immediate family” regarding exemptions under minimum wage and overtime provisions.

Mike Scime, Area Director
Gordon DeLeys, CAS
Buffalo Area Office
130 S. Elmwood Avenue, Suite 500
Buffalo, NY 14202
(716) 551-3053 x244

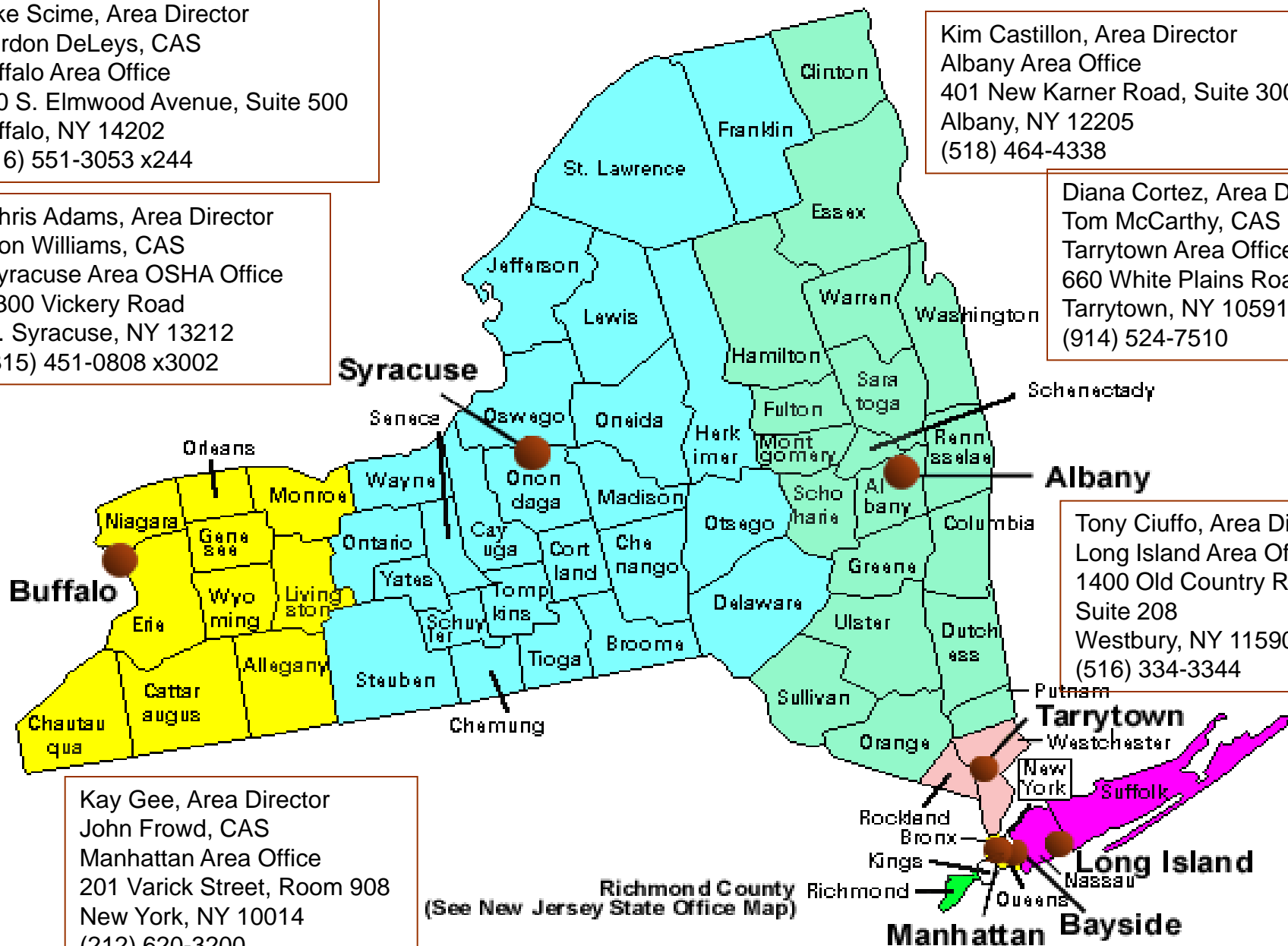
Chris Adams, Area Director
Ron Williams, CAS
Syracuse Area OSHA Office
3300 Vickery Road
N. Syracuse, NY 13212
(315) 451-0808 x3002

Kim Castillon, Area Director
Albany Area Office
401 New Karner Road, Suite 300
Albany, NY 12205
(518) 464-4338

Diana Cortez, Area Director
Tom McCarthy, CAS
Tarrytown Area Office
660 White Plains Road
Tarrytown, NY 10591
(914) 524-7510

Tony Ciuffo, Area Director
Long Island Area Office
1400 Old Country Road
Suite 208
Westbury, NY 11590
(516) 334-3344

Kay Gee, Area Director
John Frowd, CAS
Manhattan Area Office
201 Varick Street, Room 908
New York, NY 10014
(212) 620-3200



LEP Inspections (started after 07/01/14)

1. Albany Area Office – 3 inspections
2. Buffalo Area Office – 2 inspections
3. Syracuse Area Office – 3 inspections

Dairy Farm LEP inspections attempted/completed since 07/01/14 – 11
(3 farms less than 11 employees)



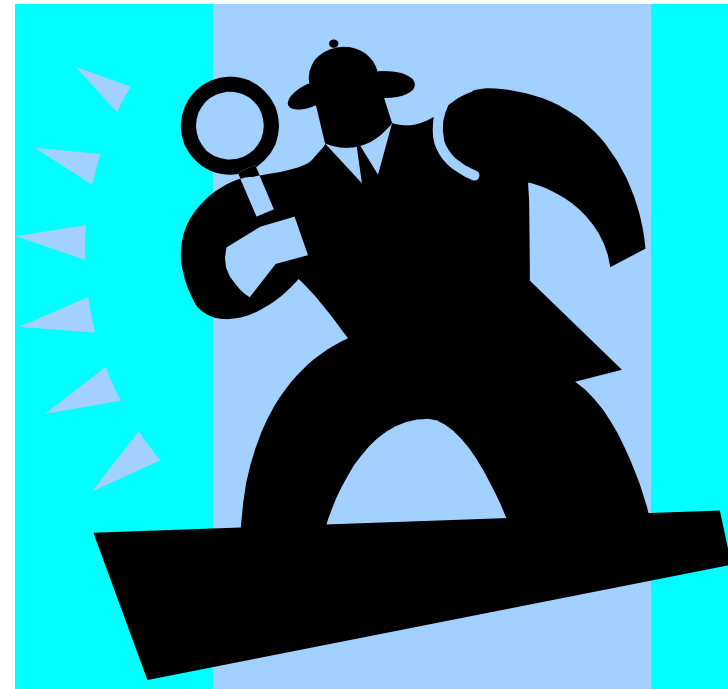
NYS DOL 21d Onsite Consultation Program

➤ Consultation Programs

New York: NYS Department of Labor/OSHA

- Syracuse, New York
- Buffalo, New York
- Albany, New York

25 visits conducted statewide



Occupational Safety & Health Administration

[Worker Rights](#) [Anti-Retaliation](#) [Regulations](#) - [Small Business](#) - [Data & Statistics](#) - [Enforcement](#) - [Training](#) - [Publications](#) [Hazards](#) [En Español](#)

Filing a Complaint

How to File a Complaint with OSHA

Filing a Complaint

[Recordkeeping Rule Updates](#)

[Protecting Temporary Workers](#)

[OSHA QuickTakes Newsletter](#)

OSHA[®]
Occupational Safety
Health Administration

**Visit our new
and improved
homepage at
www.osha.gov**

IN FOCUS

4,405 workers died on the job in 2013

8/21/14 NM: Worker electrocuted when aerial lift contacted power line.

Fatality Reports



"No one should have to sacrifice their life for their livelihood, because a nation built on the dignity of work must provide safe working conditions for its people."

— Secretary of Labor Thomas E. Perez

NEWSLETTER

[OSHA QuickTakes](#)

NEWS

HOW TO...

- [File a complaint](#)
- [Get a FREE OSHA poster](#)
- [Report a fatality, in-patient hospitalization, amputation or loss of an eye](#)
- [Get information on recordkeeping](#)
- [Get help for small businesses](#)
- [Get the latest industry/hazards alerts](#)
- [Find out if OSHA has inspected a workplace](#)
- [Find information on construction hazards](#)
- [Get help for clinicians](#)
- [Learn about partnerships and cooperative programs](#)



UNITED STATES
DEPARTMENT OF LABOR



[A to Z Index](#) | [Contact Us](#) | [FAQs](#) | [About OSHA](#)

Occupational Safety & Health Administration

SHARE   

★ Was this page helpful?

[Worker Rights](#) [Anti-Retaliation](#) [Regulations](#) [Employers](#) [Data & Statistics](#) [Enforcement](#) [Training](#) [Publications](#) [Hazards](#) [En Español](#)

Filing a Complaint

[How to File a Complaint with OSHA](#)

IN FOCUS



Chemical Management & PELs RFI



[Inspection Data](#)

[Search by Establishment](#)

[Search by Industry](#)

[Frequently Cited OSHA Standards](#)

[Commonly Used Statistics](#)

[Chemical Exposure Health Data](#)

[Employment Specific Injury & Illness Rates \(OSHA Data Initiative\)](#)

[Employment Specific Injury & Illness Rates on www.Data.gov](#)

[DOL Enforcement Website](#)

[Data Catalog](#)

[Worker Fatalities Reports](#)

[Worker Fatalities Reports on www.Data.gov](#)

[Fatality and Catastrophe Investigation Summaries](#)

[BLS Work Related Injury/Illness Statistics](#)

[Other Statistics](#)

12/10/20

buoy that tell from crane.

Fatality Reports



"No one should have to sacrifice their life for their livelihood, because a nation built on the dignity of work must provide safe working conditions for its people."

— Secretary of Labor Thomas E. Perez

NEWSLETTER

OSHA QuickTakes

NEWS

[More News](#)

February 2, 2015

Ashley Furniture faces \$1.76M in fines after OSHA finds more than 1,000 worker injuries at Wisconsin site in past 36 months

[Complaint](#)

[g Fatalities & Severe Injuries](#)

[Keeping Updates](#)

[Weather](#)

[g Temporary Workers](#)

[Complaint](#)

- [Get a FREE OSHA poster](#)
- [Get information on reporting severe work-related injuries, illnesses and fatalities to OSHA](#)
- [Get information on recordkeeping & reporting requirements](#)
- [Get help for employers](#)
- [Get the latest industry/hazards alerts](#)
- [Find out if OSHA has inspected a workplace](#)
- [Find information on construction hazards](#)
- [Get help for clinicians](#)
- [Learn about partnerships and cooperative programs](#)
- [Find information on state plans](#)
- [Find an OSHA office](#)
- [OSHA's free on-site consultation program for](#)



UNITED STATES DEPARTMENT OF LABOR

[A to Z Index](#) | [Newsroom](#) | [Contact Us](#) | [FAQs](#) | [About OSHA](#)

OSHA

SHARE

OSHA QuickTakes

Newsletter

RSS Feeds

★ Was this page helpful?

Occupational Safety & Health Administration we Can Help

[What's New](#) | [Offices](#) [Home](#)[Workers](#)[Regulations](#)[Enforcement](#)[Data & Statistics](#)[Training](#)[Publications](#)[Newsroom](#)[Small Business](#)[Anti-Retaliation](#)

This page enables the user to search for OSHA enforcement inspections by the name of the establishment. Information may also be obtained for a [specified inspection](#) or inspections within a [specified SIC](#).

[Establishment](#)

State

All States

Fed & State

OSHA Office

All Offices

[Case Status](#)☒ All ☐ Closed ☐ Open[Violation Status](#)☒ All ☐ With Violations ☐ Without Violations[Inspection Date](#)

Start Date

November

6

2009

End Date

November

6

2014

Submit

Reset



Note: Please read important information below regarding interpreting search results before using.

NOTE TO USERS

The Integrated Management Information System (IMIS) was designed as an information resource for in-house use by OSHA staff and management, and by state agencies which carry out federally-approved OSHA programs. Access to this OSHA work product is being afforded via the Internet for the use of members of the public who wish to track OSHA interventions at particular work sites or to perform statistical analyses of OSHA enforcement activity. It is critical that users of the data understand several aspects of the system in order to accurately use the information.

The source of the information in the IMIS is the local federal or state office in the geographical area where the activity occurred. Information is entered as events occur in the course of agency activities. Until cases are closed, IMIS entries concerning specific OSHA inspections are subject to continuing correction and updating, particularly with regard to citation items, which are subject to modification by amended citations, settlement agreements, or as a result of contest proceedings. THE USER SHOULD ALSO BE AWARE THAT DIFFERENT COMPANIES MAY HAVE SIMILAR NAMES AND CLOSE ATTENTION TO THE ADDRESS MAY BE NECESSARY TO AVOID MISINTERPRETATION.

The Integrated Management Information System (IMIS) is designed and administered as a management tool for OSHA to help it direct its resources. When IMIS is put to new or different uses, the data should be verified by reference to the case file and confirmed by the appropriate federal or state office. Employers or employees who believe a particular IMIS entry to be inaccurate, incomplete or out-of-date are encouraged to contact the OSHA field office or state plan agency which originated the entry.



Inspections within Industry x

UNITED STATES DEPARTMENT OF LABOR

[A to Z Index](#) | [Newsroom](#) | [Contact Us](#) | [FAQs](#) | [About OSHA](#)

SHARE



OSHA QuickTakes Newsletter

RSS Feeds

★ Was this page helpful?

Occupational Safety & Health Administration | We Can Help

[What's New](#) | [Offices](#)

[Workers](#) | [Regulations](#) | [Enforcement](#) | [Data & Statistics](#) | [Training](#) | [Publications](#) | [Newsroom](#) | [Small Business](#) | [Anti-Retaliation](#)

the user to search for inspections within a group. Information may be a [specified inspection](#) or a [specified](#) also search parameter

has been collected for 03. If selecting specific industry prior specification.

read [important](#) regarding interpreting search

SIC 2,3,4-Digit

NAICS 11212 2,3,4,5,6-Digit

State New York Fed & State

OSHA Office All Offices

Inspection Date :

Start Date July 1 2014

End Date February 12 2015

Other Options All Owner Any Scope

FedAgn Code

Submit

Reset

Management Information System (IMIS) was designed as an information resource for in-house use by OSHA staff and state agencies which carry out federally-approved OSHA programs. Access to this OSHA work product is being made available on the Internet for the use of members of the public who wish to track OSHA interventions at particular work sites or to perform research on OSHA enforcement activity. It is critical that users of the data understand several aspects of the system in order to use the information.

Dairy Cattle and Milk Production - NAICS 11212



Hazards Identified on Dairy Farms ("Dairy Dozen")

1. Manure Storage and Collection Structures
2. Dairy Bull and Cow Behavior / Worker Positioning
3. Electrical Systems
4. Skid Steer Operation
5. Tractor Operation
6. Guarding of Power Take-Offs (PTOs)
7. Machine Guarding: Field and Farmstead Equipment
8. Lockout – Unexpected Energy Release
9. Hazard Communication
10. Confined Spaces
11. Horizontal Bunker Silos
12. Noise



can you
hear me
NOW!?

Hazard Communication

Serious **chemical ingestion, absorption, splash, fire, or other hazards** may exist where hazardous chemicals such as teat dips, hoof care products, sanitization products, etc. are stored, dispensed, and used **without appropriate training** and **information** including the availability of Safety Data Sheets (SDSs).

1928.21(a)(5) Hazard Communication – 1910.1200

1910.1200(a)(1)

The purpose of this section is to ensure that the **hazards of all chemicals produced or imported** are evaluated, and that information concerning their hazards is **transmitted to employers and employees**. This transmittal of information is to be accomplished by means of **comprehensive hazard communication programs**, which are to include **container labeling and other forms of warning, safety data sheets and employee training**.



1910.1200(e)(1) Hazard Communication



- Hazard Communication Program – 1910.1200(e)(1)
- Safety Data Sheets – 1910.1200(g)(8)
- Container Labeling – 1910.1200(f)(6)
- Employee Training – 1910.1200(h)(1)



Hoof Dip, Milking Parlor & Cleaning Chemicals

- ▶ Formaldehyde
- ▶ Copper Sulfate
- ▶ Hydrogen Peroxide acid mixture
- CIP Operations



Health	3
Fire	2
Reactivity	0
Personal Protection	G

Material Safety Data Sheet Formaldehyde 37% solution MSDS

Section 1: Chemical Product and Company Identification	
Product Name: Formaldehyde 37% solution Catalog Codes: SLF1426 CAS#: Mixture. RTECS: LP8925000 TSCA: TSCA 8(b) Inventory: Formaldehyde; Methyl alcohol; Water CI#: Not applicable. Synonym: Formalin Chemical Name: Formaldehyde Chemical Formula: HCHO	Contact Information: Sciencelab.com, Inc. 14025 Smith Rd. Houston, Texas 77396 US Sales: 1-800-901-7247 International Sales: 1-281-441-4400 Order Online: ScienceLab.com CHEMTREC (24HR Emergency Telephone), call: 1-800-424-9300 International CHEMTREC, call: 1-703-527-3887 For non-emergency assistance, call: 1-281-441-4400

Section 2: Composition and Information on Ingredients		
Composition:		
Name	CAS #	% by Weight
Formaldehyde	50-00-0	36.5-38
Methyl alcohol	67-56-1	10-15
Water	7732-18-5	47-53.5
Toxicological Data on Ingredients: Formaldehyde: ORAL (LD50): Acute: 100 mg/kg [Rat], 42 mg/kg [Mouse], 260 mg/kg [Guinea pig], MIST (LC50): Acute: 454000 mg/m 4 hours [Mouse], Methyl alcohol: ORAL (LD50): Acute: 5628 mg/kg [Rat], DERMAL (LD50): Acute: 15800 mg/kg [Rabbit], VAPOR (LC50): Acute: 64000 ppm 4 hours [Rat].		

Potential Chronic Health Effects:

Hazardous in case of skin contact (sensitizer). **CARCINOGENIC EFFECTS:** Classified A2 (Suspected for human.)

Potential Acute Health Effects:

Very hazardous in case of eye contact (irritant), of ingestion, . Hazardous in case of skin contact (irritant, sensitizer, permeator), of eye contact (corrosive). Slightly hazardous in case of skin contact (corrosive). Severe over-exposure can result in death. Inflammation of the eye is characterized by redness, watering, and itching.



General Duty Clause Section 5(a)(1)

NO EYE WASH
READILY AVAILABLE







Personal Protective Equipment (PPE): [Section 5(a)(1) – ANSI Standards]

▶ Recommend follow:

1910.132 – Hazard Assessment

- Required PPE
- Written Certification
- Training



▶ Specific Requirements

- ▶ 1910.133 – Eye / Face
- ▶ 1910.135 – Head
- ▶ 1910.137 – Electrical
- ▶ 1910.95 – Noise

1910.134 – Respiratory

1910.136 – Foot

1910.138 – Hand



5(a)1) - Guarding floor and wall openings

(ANSI A1264.1 Safety requirements for walking working surfaces)



5(a)(1) Guarding floor and wall openings

Mezzanine with railings
ANSI A1264.1
(Recommend follow 1910.23)



Fixed Industrial Stairs – 5A1

(ASAE S412.1 and ANSI A1264.1 Stairs)



5(a)(1) Portable Ladders

- ▶ Practice ladder safety



5(a)(1) Manure Storage & Processing



Manure Storage Facilities and Collection Structures [Section 5(a)(1)]

Fatal or serious **drowning hazards** may exist where farm vehicles such as tractors, manure spreading trucks, manure pumps/agitators, and skid-steers are operated in near proximity to waste storage impoundments and structures without the benefit of **control measures**, such as

- 1) **safety stops and/or gates** at manure push-off ramps and load-out areas to prevent accidental entry of machinery; and

Guidance document

American Society of Agricultural and
Biological Engineers **ASABE EP 470.1**
Manure Storage Safety

6.1.5 All push off platforms or piers for open, below-ground manure storage structures need a barrier strong enough to stop a slow moving tractor or skid loader.



Entry Concern



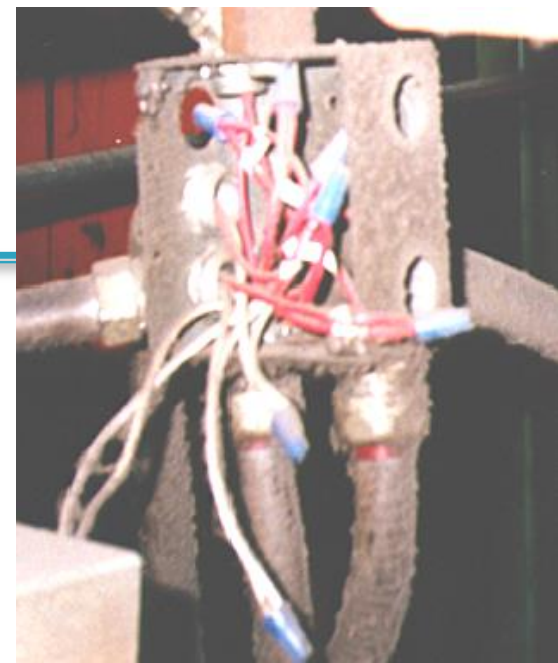
Recommend follow 1910.146 or 1910.272: Permit Required Confined Spaces – Best Practice

- ▶ Identify all permit-required confined spaces in the workplace
- ▶ Prohibit unauthorized entry
- ▶ Develop written program
- ▶ Establish entry procedures
 - Written entry permit
 - Alternate procedures
 - Ability to reclassify space to “Non-Permit Required”
- ▶ Annual Audit

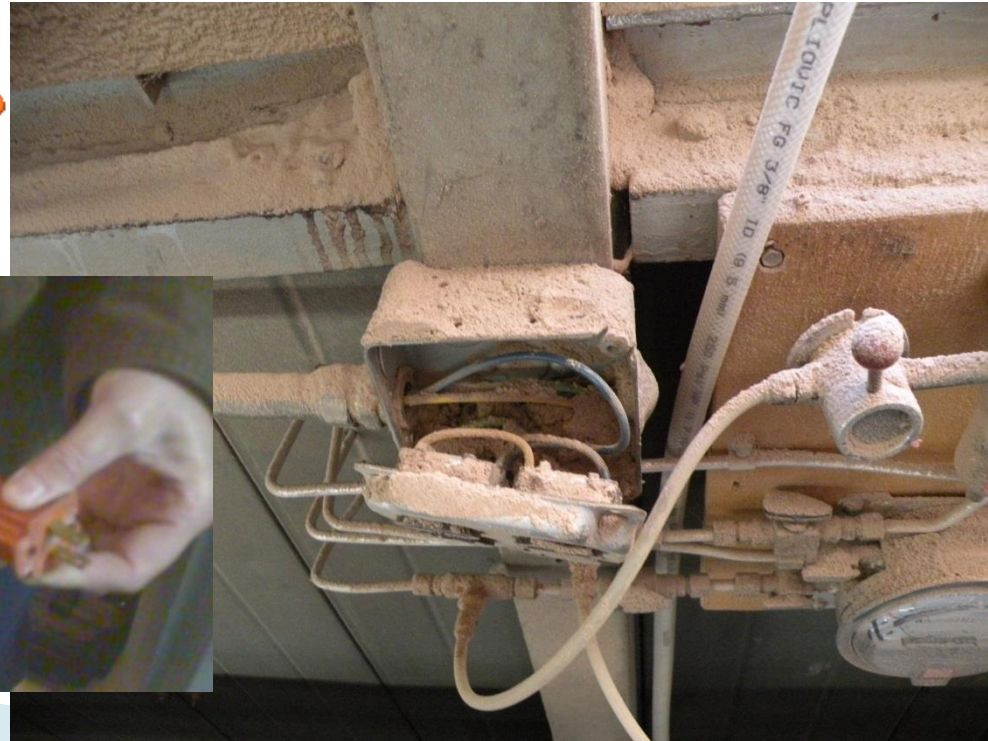
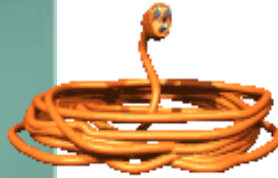
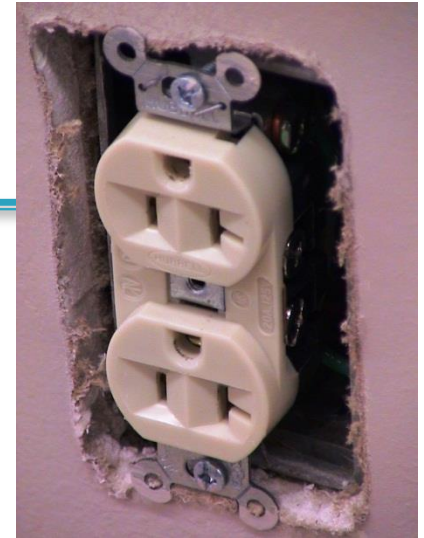
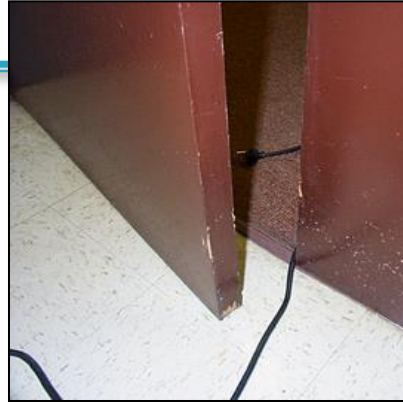


5(a)(1) Electrical Hazards

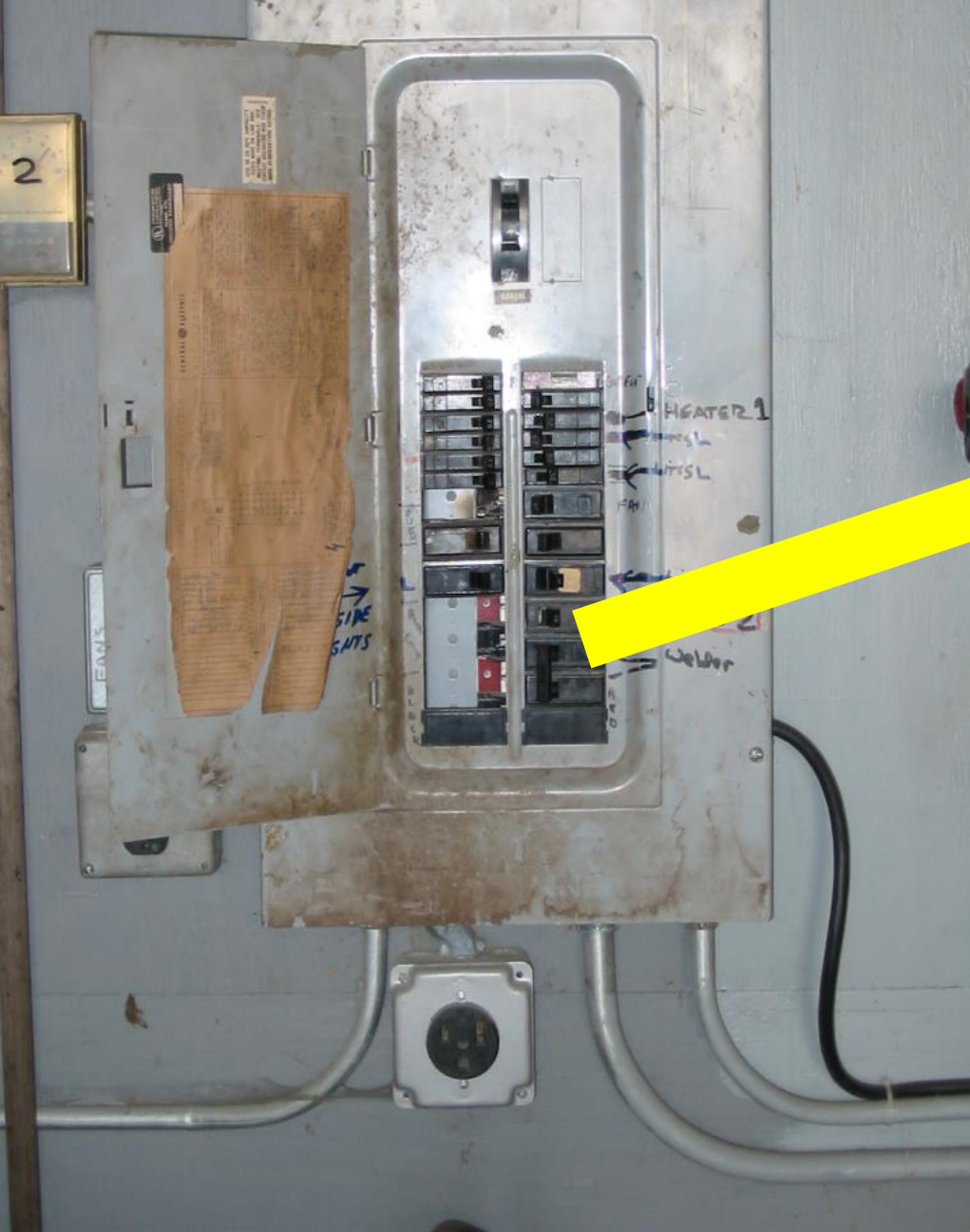
- ▶ Overhead: Pulling Implements
- ▶ Electrical Contact with Live Parts
- ▶ Fire: Faulty Electrical
- ▶ Explosion
- ▶ Issues
 - Missing Knockouts
 - Open Boxes
 - Animal Damage



Electrical Hazards

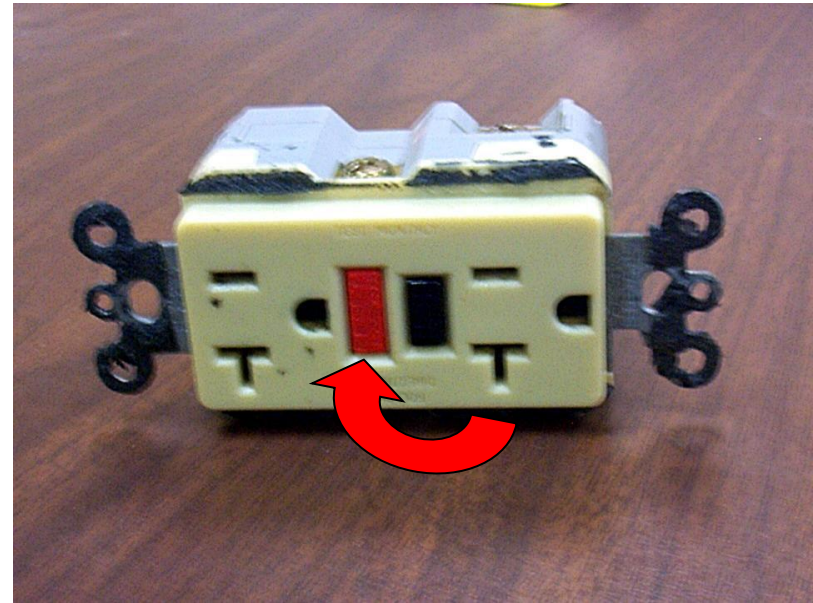


Electrical, General Requirements



Preventing Electrical Hazards – Proper Wiring and Connectors

- Use and test GFCI's
- Check switches and insulation
- Use three prong plugs
- Use extension cords only when necessary & assure in proper condition and right type for job
- Use correct connectors



Skid-Steer Loader [Section 5(a)(1)]

Fatal or serious crushed-by, struck-by, caught in-between, rollover hazards may exist where employees are:

1. **improperly trained** on operating, servicing, or maintaining skid-steer loaders according to the **manufacturer's** instructions;
2. **failure to use** approved lift arm support devices when servicing or maintaining the skid-steer loader; and
3. **intentional bypassing** of safety features of the skid-steer loader such as back-up alarms, seat belts, and control interlock systems.



Powered Industrial Vehicle

- No 1928 standard

5(a)(1) Silo Ladders

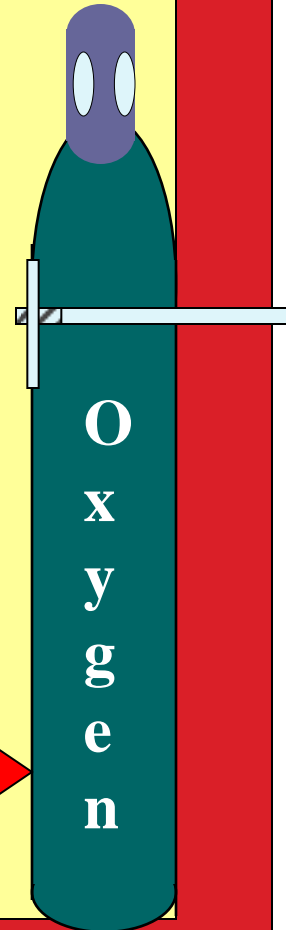
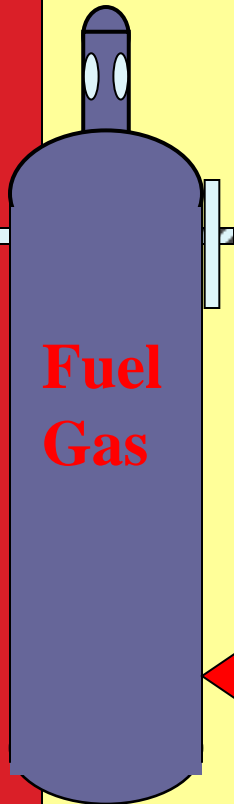
(ANSI A14.3 Safety standard for fixed ladders)



5(a)(1) - Storage of Flammables

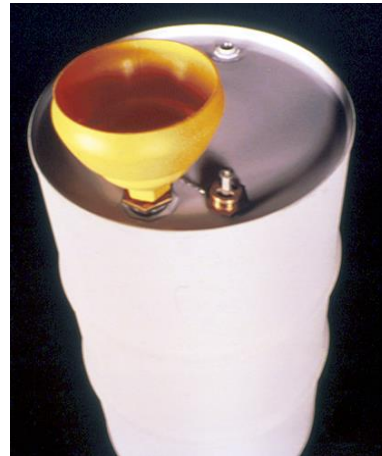
Indoor cylinder storage

- ▶ Well protected
- ▶ Well insulated
 - ▶ Dry
- ▶ Twenty feet from flammable or combustible materials



20 Feet

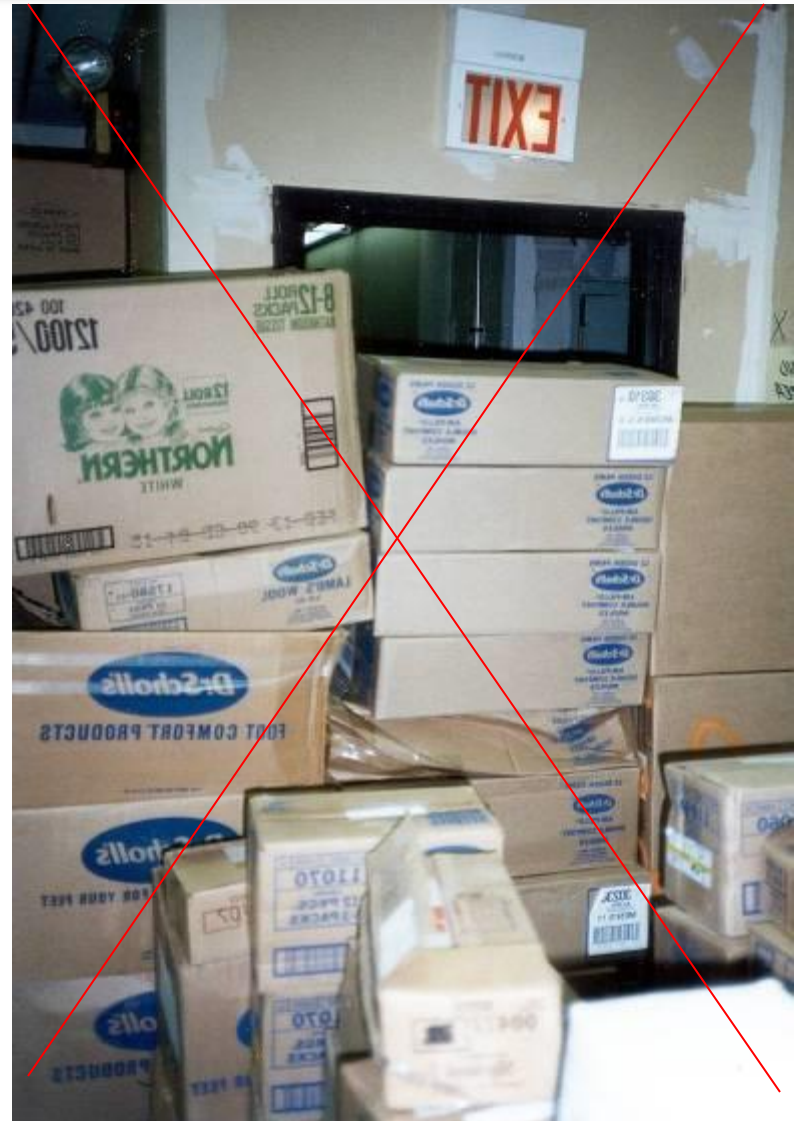
5(a)(1) –Dispensing Flammable Liquids



Follow 1910.106 Class 1,2 or 3 flammable liquids with a flashpoint below 100 F provide bonding and grounding.

5(a)(1) - Exit Routes - danger to employees must be minimized

- Exit routes free and unobstructed
- No materials or equipment may be placed, within the exit route
 - The exit access must not go through a room that can be locked

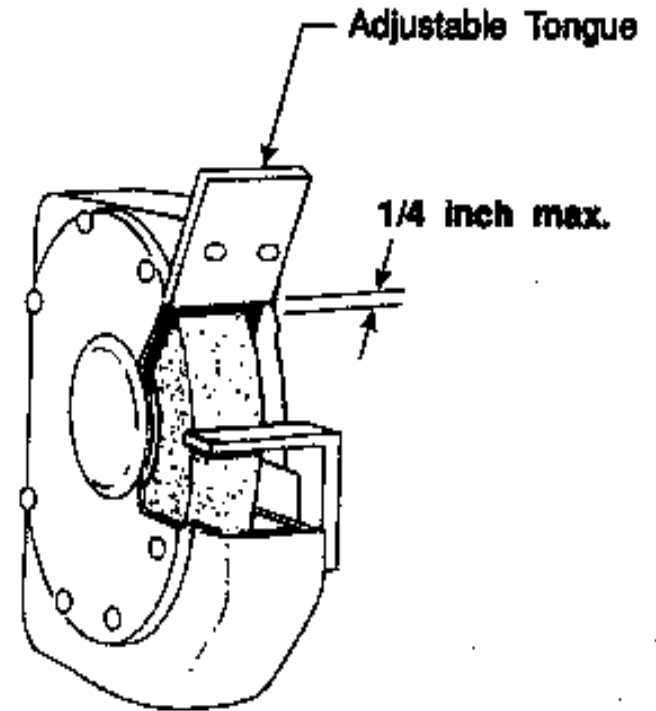
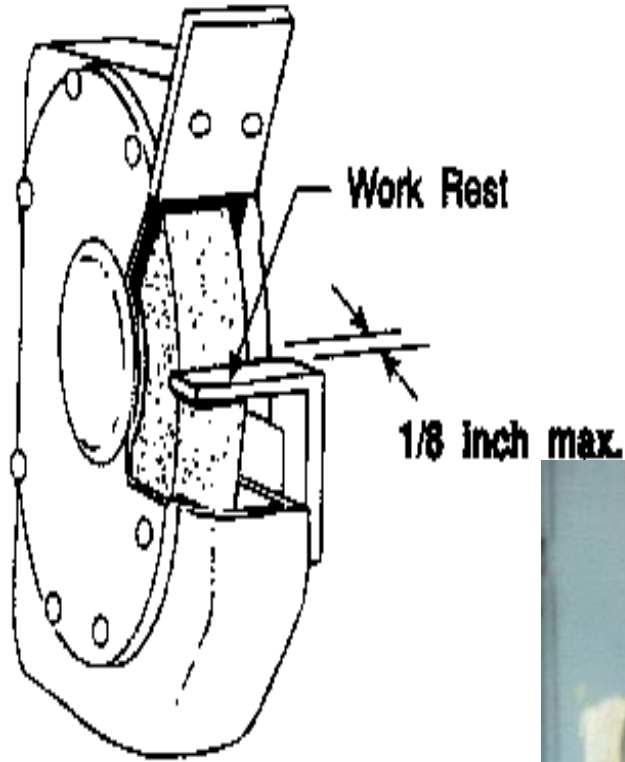




(5)(a)(1) - Fire Extinguishers



5(a)(1) – Abrasive wheels work rest & tongue guards



1928.51(b)(1) Roll-over protection structures (ROPS)



Seat Belts



29 CFR 1928.51(b)(1)

Roll-over protective structures (ROPS).

ROPS shall be provided by the employer for **each tractor operated by an employee.**

NOTE: Manufactured after October 1976

1928.51(b)(2) Seatbelts

1928.51(b)(2)(i)(B) Ensure that each employee tightens the seatbelt sufficiently to confine the employee to the protected area provided by the ROPS.

29 CFR 1928.51(d) Operating instructions.

Every employee who operates an agricultural tractor shall be informed of the operating practices contained in Appendix A of this part and of any other practices dictated by the work environment. Such information shall be provided at the **time of initial assignment and at least annually thereafter.**

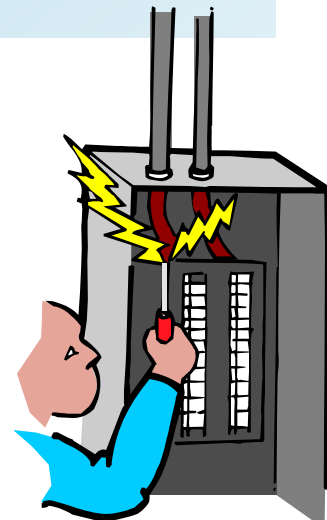
1928.57(a)(6)(ii) Hazardous energy control while performing servicing and maintenance on equipment.

Guidance documents

- Manufacturer's manual and instructions
- AEM Safety Manuals for tractors and skid steers, wheel loaders

Consider:

- How to lockout?
- Stored energy – e.g hydraulics
- Right tool for the job
- Lone worker



Recordkeeping

- ▶ Employers of 11 or more employees must maintain records of occupational injuries and illnesses

[illegible][illegible]

OSHA's Form 300 (Rev. 01/2004)


Log of Work-Related Injuries and Illnesses

You must record information about every work-related death and about every work-related injury or illness that involves loss of consciousness, restricted work activity or job transfer, days away from work, or medical treatment beyond first aid. You must also record significant work-related injuries and illnesses that are diagnosed by a physician or licensed health care professional. You must also record work-related injuries and illnesses that meet any of the specific recording criteria listed in 29 CFR Part 1904.8 through 1904.12. Feel free to use two lines for a single case if you need to. You must complete an Injury and Illness Incident Report (OSHA Form 301) or equivalent form for each injury or illness recorded on this form. If you're not sure whether a case is recordable, call your local OSHA office for help.

Attention: This form contains information relating to employee health and must be used in a manner that protects the confidentiality of employees to the extent possible while the information is being used for occupational safety and health purposes.

Year 20__

U.S. Department of Labor
Occupational Safety and Health Administration



Form approved OMB no. 1218-0176

Establishment name _____

City _____ State _____

[illegible]

Public reporting burden for this collection of information is estimated to average 14 minutes per response, including time to review the instructions, search and gather the data needed, and complete and review the collection of information. Persons are not required to respond to the collection of information unless it displays a currently valid OMB control number. If you have any comments about these estimates or any other aspects of this data collection, contact: US Department of Labor, OSHA Office of Statistical Analysis, Room N-3644, 200 Constitution Avenue, NW, Washington, DC 20210. Do not send the completed forms to this office.

Page totals▶

Be sure to transfer these totals to the Summary page (Form 300A) before you post it.

Page of

(1)	(2)	(3)	(4)	(5)	(6)
Injury	Skin disorder	Respiratory condition	Poisoning	Hearing loss	All other illnesses

OSHA Form 300A: Summary of Work-Related Injuries and Illnesses

OSHA's Form 300A (Rev. 01/2004)

Summary of Work-Related Injuries and Illnesses

All establishments covered by Part 1904 must complete this Summary page, even if no work-related injuries or illnesses occurred during the year. Remember to review the Log to verify that the entries are complete and accurate before completing this summary.

Using the Log, count the individual entries you made for each category. Then write the totals below, making sure you've added the entries from every page of the Log. If you had no cases, write "0."

Employees, former employees, and their representatives have the right to review the OSHA Form 300 in its entirety. They also have limited access to the OSHA Form 301 or its equivalent. See 29 CFR Part 1904.35, in OSHA's recordkeeping rule, for further details on the access provisions for these forms.

Number of Cases			
Total number of deaths	Total number of cases with days away from work	Total number of cases with job transfer or restriction	Total number of other recordable cases
_____	_____	_____	_____
(G)	(H)	(I)	(J)

Number of Days	
Total number of days away from work	Total number of days of job transfer or restriction
_____	_____
(K)	(L)

Injury and Illness Types
Total number of . . .
(M)

Estab

Your est

Street

City

Industry

Standards

OR

North A

Empl

Workdays

Annual

Total ho

Sign I

Knowi



OSHA Form 300A: Summary of Work-Related Injuries and Illnesses (continued)

Establishment information

Your establishment name _____

Street _____

City _____ State _____ ZIP _____

Industry description (e.g., *Manufacture of motor truck trailers*)

Standard Industrial Classification (SIC), if known (e.g., 3715)

OR

North American Industrial Classification (NAICS), if known (e.g., 336212)

Employment information (If you don't have these figures, see the Worksheet on the back of this page to estimate.)

Annual average number of employees _____

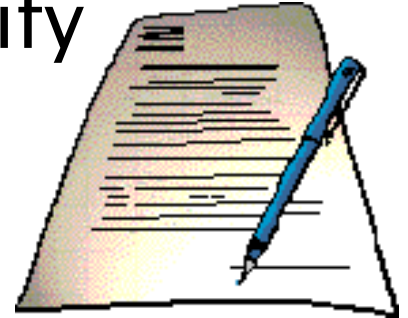
Total hours worked by all employees last year _____

Sign here

Knowingly falsifying this document may result in a fine.

1904.32 – Annual Summary

- ▶ A company executive must certify the summary:
 - An owner of the company
 - An officer of the corporation
 - The highest ranking company official working at the establishment, or
 - His or her supervisor
- ▶ Must post for 3 month period from February 1 to April 30 of the year following the year covered by the summary



Posting

- ▶ Annual summary, OSHA 300A
- ▶ Job safety/health poster
- ▶ Citations and corresponding documents

The poster is titled "Job Safety and Health It's the law!" and features the OSHA logo. It lists rights for employees and responsibilities for employers. The employee rights section includes: the right to notify the employer or OSHA about hazards; the right to request an OSHA inspection; the right to file a complaint within 30 days of retaliation; the right to see OSHA citations; the right to copies of medical records; and the right to a safe workplace. The employer responsibilities section includes: furnishing a safe workplace; complying with OSHA standards; and providing a safe workplace. The poster also includes a section for free assistance in identifying and correcting hazards, a toll-free number (1-800-321-OSHA), and the website (www.osha.gov).

Job Safety and Health
It's the law!

OSHA
Occupational Safety and Health Administration
U.S. Department of Labor

EMPLOYEES:

- You have the right to notify your employer or OSHA about workplace hazards. You may ask OSHA to keep your name confidential.
- You have the right to request an OSHA inspection if you believe that there are unsafe and unhealthful conditions in your workplace. You or your representative may participate in that inspection.
- You can file a complaint with OSHA within 30 days of retaliation or discrimination by your employer for making safety and health complaints or for exercising your rights under the OSH Act.
- You have the right to see OSHA citations issued to your employer. Your employer must post the citations at or near the place of the alleged violations.
- Your employer must correct workplace hazards by the date indicated on the citation and must certify that these hazards have been reduced or eliminated.
- You have the right to copies of your medical records and records of your exposures to toxic and harmful substances or conditions.
- Your employer must post this notice in your workplace.
- You must comply with all occupational safety and health standards issued under the OSH Act that apply to your own actions and conduct on the job.

EMPLOYERS:

- You must furnish your employees a place of employment free from recognized hazards.
- You must comply with the occupational safety and health standards issued under the OSH Act.

This free poster available from OSHA –
The Best Resource for Safety and Health

Free assistance in identifying and correcting hazards or complying with standards is available to employers, without citation or penalty, through OSHA-supported consultation programs in each state.

1-800-321-OSHA
www.osha.gov

OSHA 3095-10-0001

<http://www.dol.gov/oasam/programs/osdbu/sbrefa/poster/matrix.htm>

1910.57 Guarding of Power Take-Offs (PTO)

Fatal or serious entanglement or amputation hazards may exist where **power take-off shafts** and **other related components** on farm field and farmstead equipment are not **properly guarded**.

Farm field equipment:
*29 CFR 1928.57(b)(1)(i) through (iii)*¹¹

1928.57(b)(1)(i) All power take-off shafts, including rear, mid-or side – mounted shafts, shall be guarded either by a master shield, as provided in paragraph (b)(1)(ii) of this section , or by other protective guarding.



PTO Shafts



Guarding of other power transmission and functional components

Exposed belts, pulleys, gears, chains, sheaves, sprockets and projections on shafts such as bolts, keys or set screws shall be guarded on all farm field and farmstead equipment.

- Augers and Conveyors
- Barn scraper
- Ventilation Fans
- TMR mixers

Farm field equipment:

29 CFR 1928.57(b)(2)(i) through (iii)

29 CFR 1928.57(b)(3)

29 CFR 1928.57(b)(4)(i) and (ii)

Farmstead equipment:

29 CFR 1928.57(c)(2)(i) and (ii)

29 CFR 1928.57(c)(3)(i) through (iii)

29 CFR 1928.57(c)(4)(ii)



Farmstead equipment

- ▶ Augers



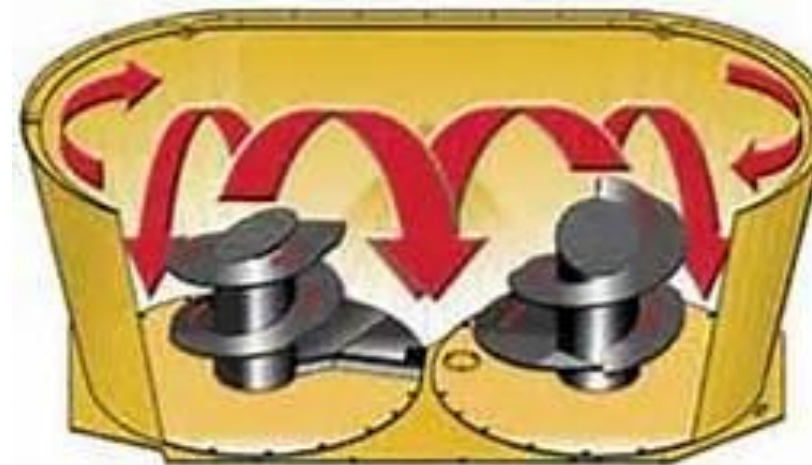
- Scraper



- ▶ Sweep arm mechanisms



Machine Guarding: 1928.57



5(a)(1) Aerial Lifts (ANSI A92.1 Safety Standard for Aerial Lifts)

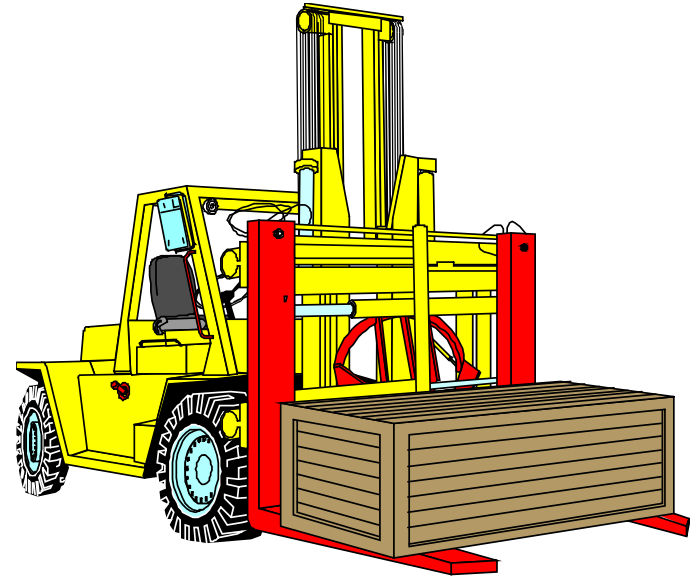


#5(a)(1) Powered industrial trucks (ASME B56.1 Safety Standard for Lift Trucks)



Modifications

- ▶ Modifications and additions which affect capacity and safe operation shall not be performed by the customer or user without manufacturer's prior written approval. Capacity, operation, and maintenance instruction plates, tags, or decals shall be changed accordingly.



Must get manufacturer's approval for modification



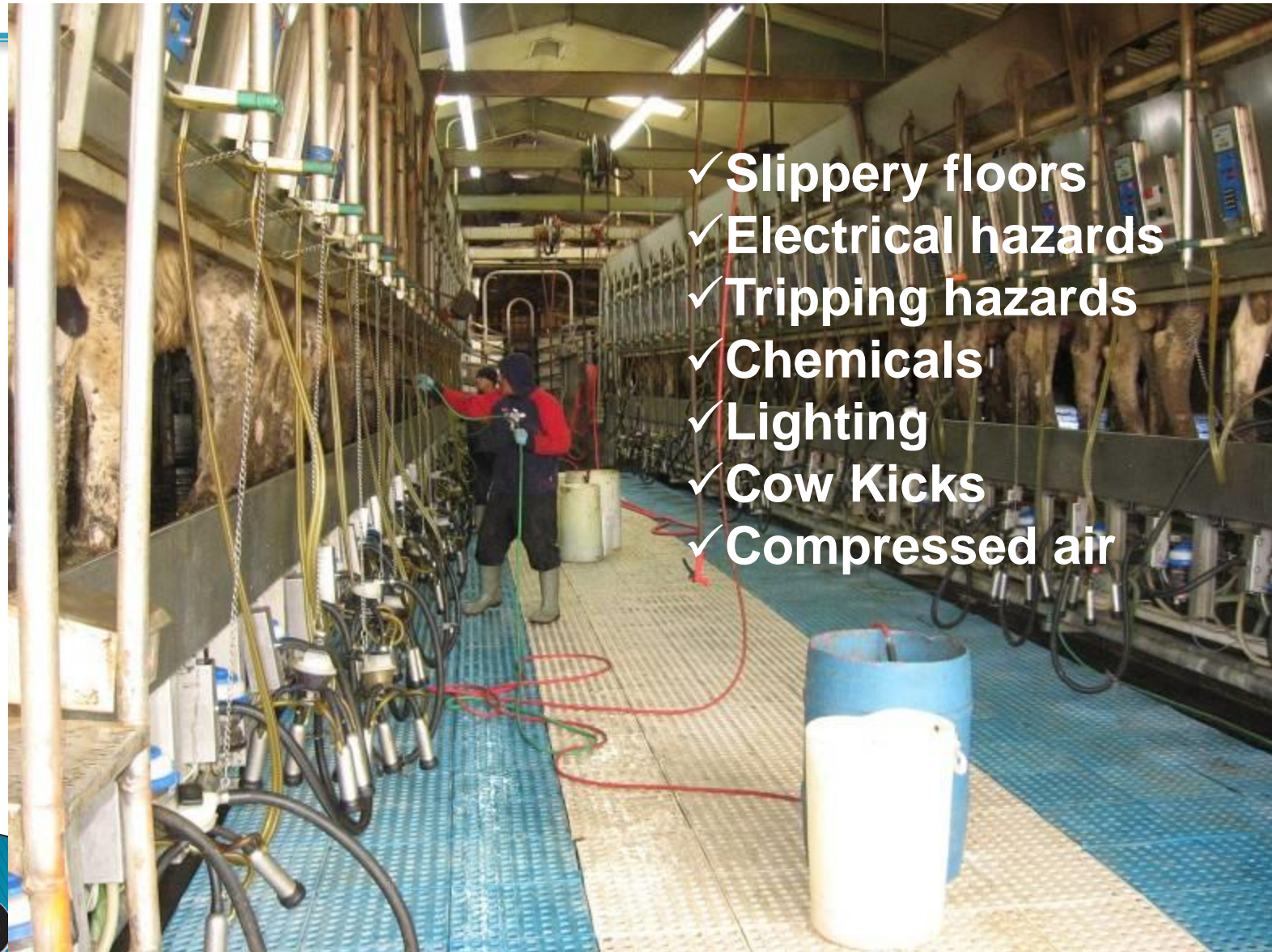
Farm Equipment Safety



- ✓ Training
- ✓ ROPS and seatbelts
- ✓ PTO
- ✓ Other guards



Milking Room Hazards



- ✓ Slippery floors
- ✓ Electrical hazards
- ✓ Tripping hazards
- ✓ Chemicals
- ✓ Lighting
- ✓ Cow Kicks
- ✓ Compressed air



What are you doing in your Machine Shops/Shed?

- ▶ Vehicle and machinery repair
 - Elevated/blocked machinery
 - Compressed gases/air
 - Welding
 - Cutting
 - Grinding
 - Electrical
 - Storage



NYS DOL 21d Onsite Consultation Program

➤ Consultation Programs

- New York: NYS Department of Labor/OSHA
- Syracuse, (315-479-3350), Keith Gillette,
Gillette.Keith@dol.gov
- Buffalo, (716-847-7166), Greg Conrad,
Conrad.Greg@dol.gov
- Albany, (518-457-2810), Bob Francis,
Francis.Bob@dol.gov
- www.labor.state.ny.us/workerprotection/safetyhealth/DOSH_ONSITE_Consultation.shtm

Mike Scime, Area Director
Gordon DeLeys, CAS
Buffalo Area Office
130 S. Elmwood Avenue, Suite 500
Buffalo, NY 14202
(716) 551-3053 x244

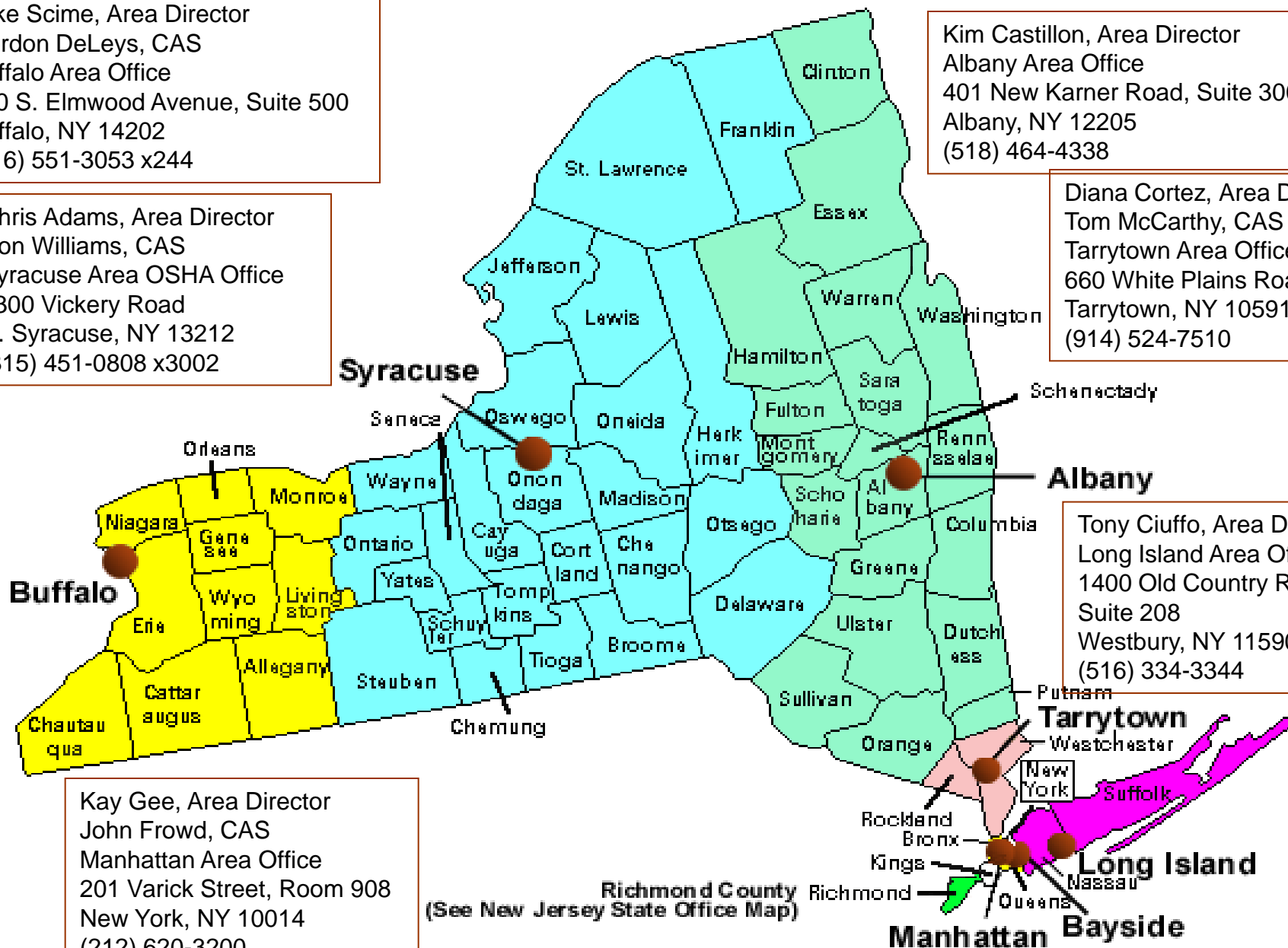
Chris Adams, Area Director
Ron Williams, CAS
Syracuse Area OSHA Office
3300 Vickery Road
N. Syracuse, NY 13212
(315) 451-0808 x3002

Kim Castillon, Area Director
Albany Area Office
401 New Karner Road, Suite 300
Albany, NY 12205
(518) 464-4338

Diana Cortez, Area Director
Tom McCarthy, CAS
Tarrytown Area Office
660 White Plains Road
Tarrytown, NY 10591
(914) 524-7510

Tony Ciuffo, Area Director
Long Island Area Office
1400 Old Country Road
Suite 208
Westbury, NY 11590
(516) 334-3344

Kay Gee, Area Director
John Frowd, CAS
Manhattan Area Office
201 Varick Street, Room 908
New York, NY 10014
(212) 620-3200





**Occupational Safety
and Health Administration**

Ronald Williams
(315) 451-0808 ext. 3002
williams.ronald@dol.gov

www.osha.gov

